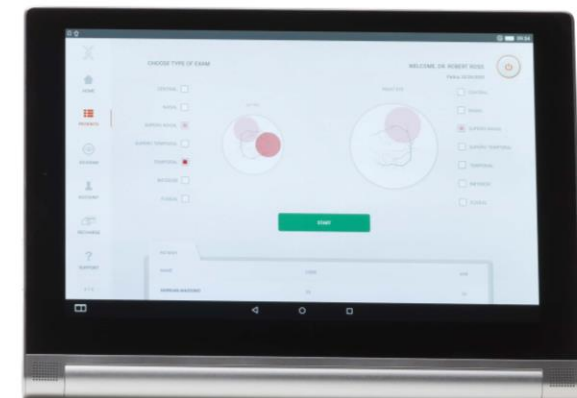




n e x y

WHAT IS NEXY?

Nexy is a medical device for retinal screening.
Nexy provides high quality retinal images with a fully automated capturing system.





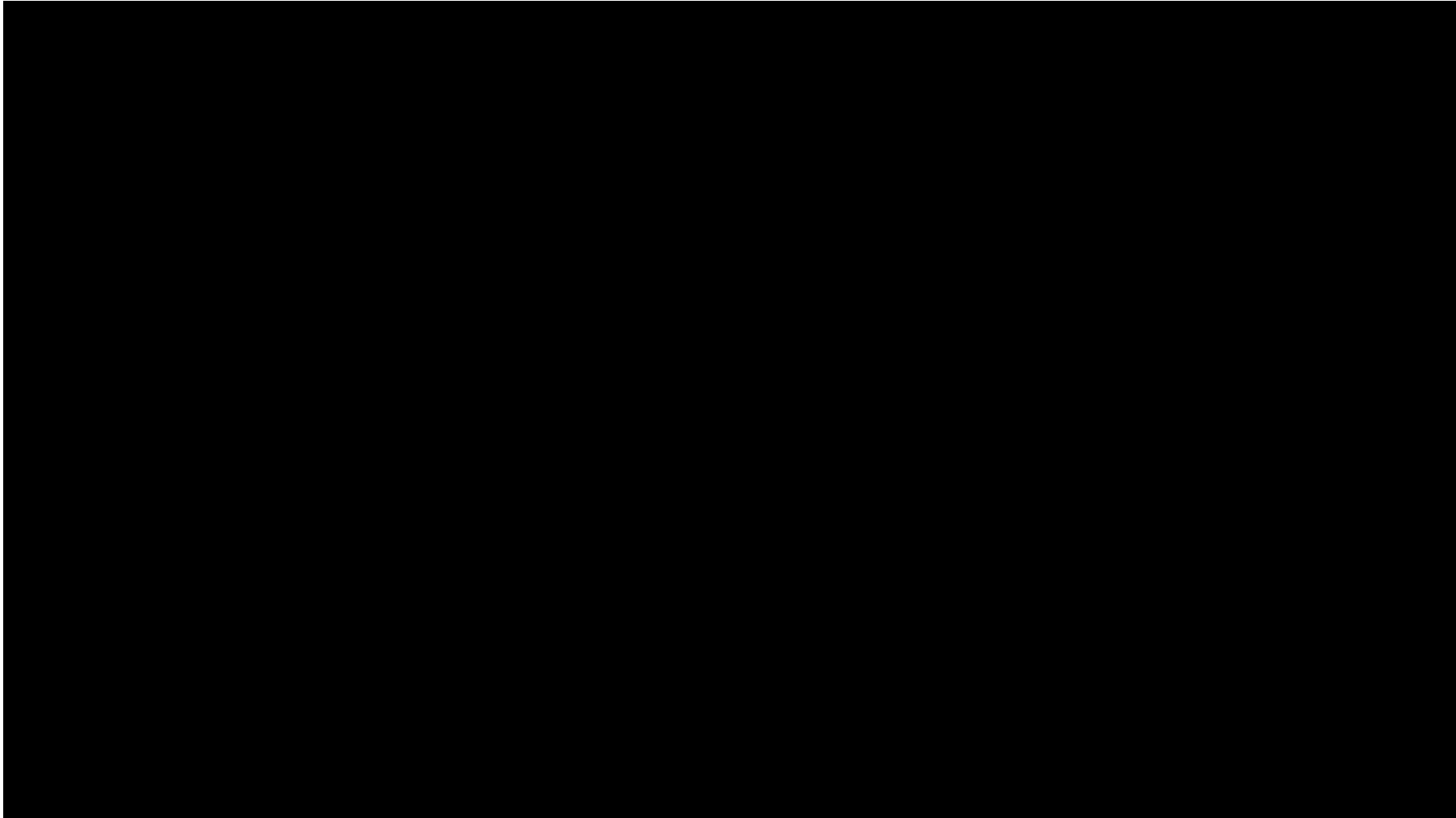
VALUE ADDED FEATURES

- **AUTOMATIC CAPTURE:** auto alignment, auto focus. Just press start and Nexy does the rest
- **HIGH QUALITY IMAGES** for detailed screening evaluation with minimal personal training
- **PLEASANT AESTHETIC**, small footprint and ergonomic design
- **MODERN GESTURE INTERACTION:** the intuitive interface facilitates quick start and navigation
- **DATA CONSULTATION** from a local PC
- **TEAMVIEWER** application for remote assistance



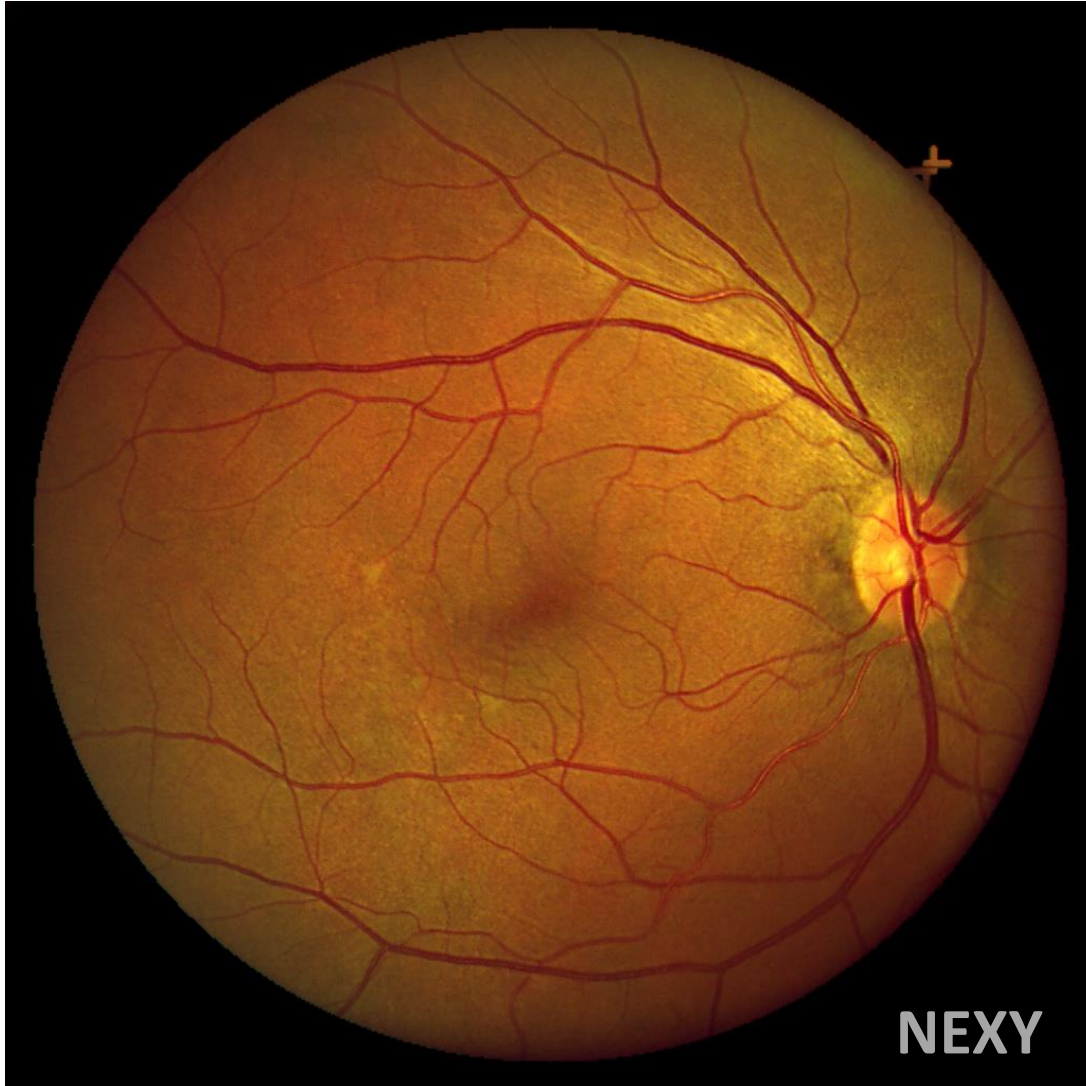


THE USE



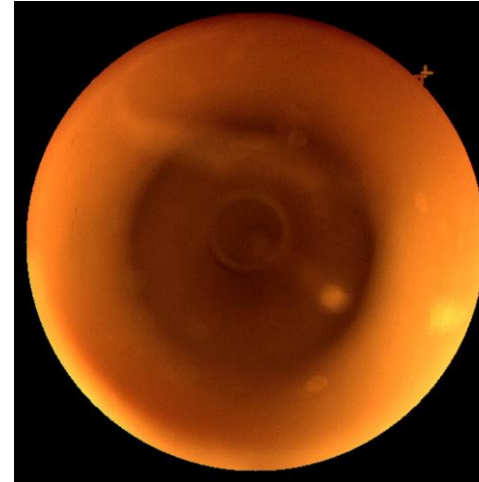


IMAGES COMPARISON



STATISTICS ON ONE WEEK OF OPERATION

pupil size (mm)	# subjects	%
2,25	1	0,1%
2,7	11	1,1%
3,15	26	2,7%
3,6	69	7,1%
4,05	91	9,3%
4,5	114	11,7%
4,95	123	12,6%
5,4	107	11,0%
5,85	111	11,4%
6,3	94	9,7%
6,75	93	9,5%
7,2	72	7,4%
7,65	39	4,0%
8,1	17	1,7%
8,55	4	0,4%
9	2	0,2%
total subjects	974	100,0%



Zero or low information content in these images

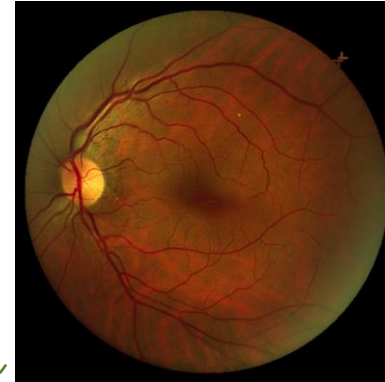
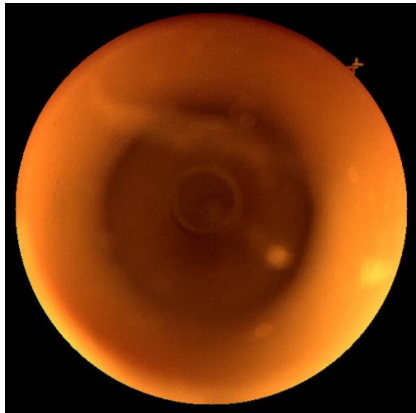


Good quality and readable images

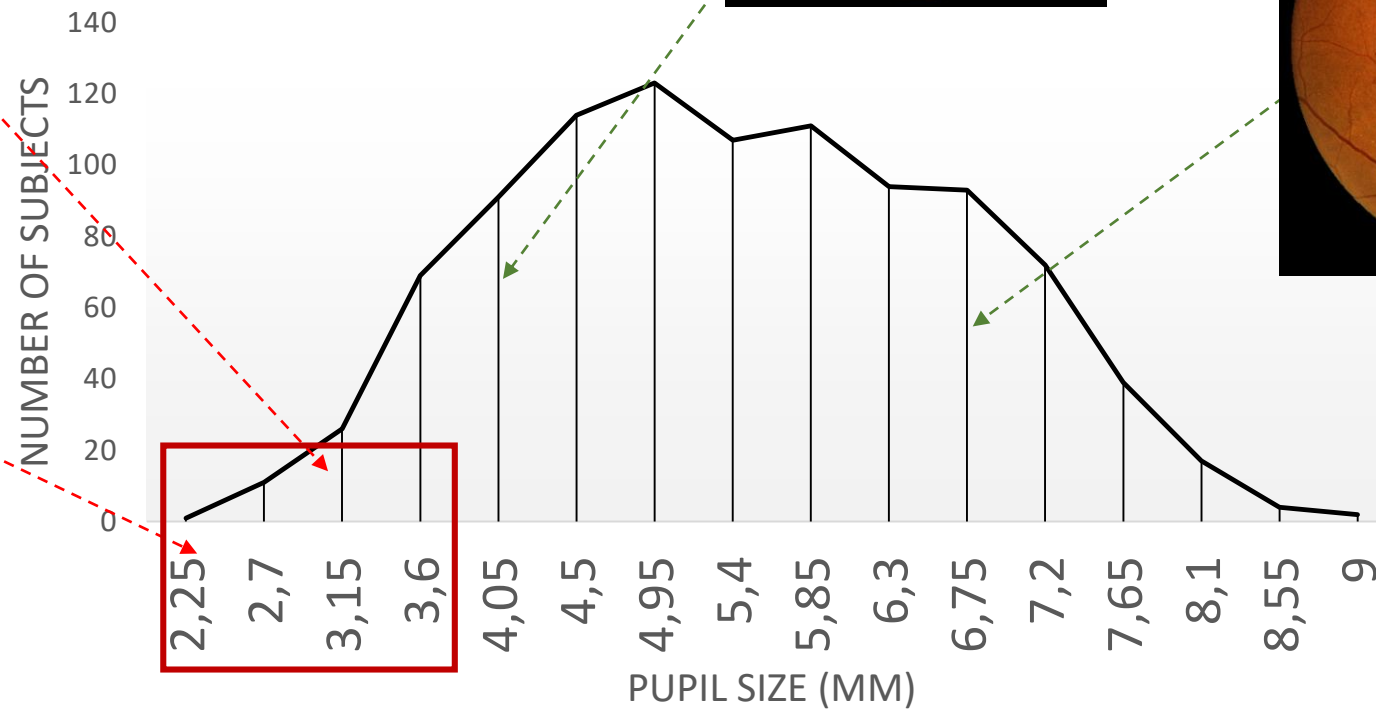
STATISTICS ON ONE WEEK OF OPERATION



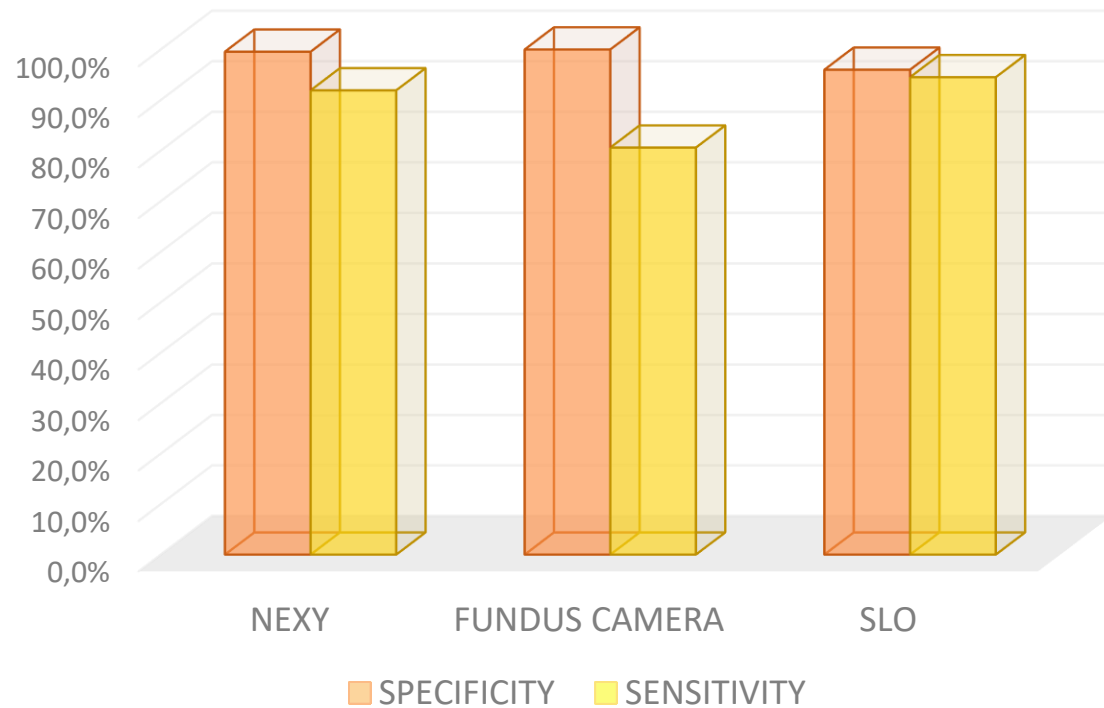
Low information content in these images



All information is preserved in these images



SENSITIVITY SPECIFICITY



	SPECIFICITY	SENSITIVITY
NEXY	99,6%	91,9%
TRADITIONAL FUNDUS CAMERA	100,0%	80,6%
SCANNING LASER OPHTHALMOSCOPE (SLO)	96,0%	94,5%

SPECIFICITY (=true negative/healthy): the percentage of healthy people who are correctly identified as not having the condition.

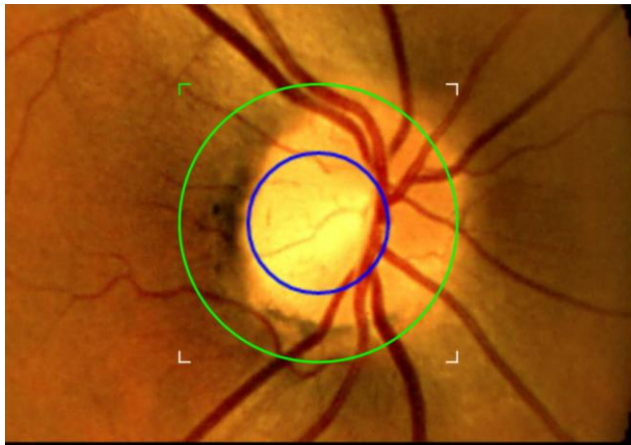
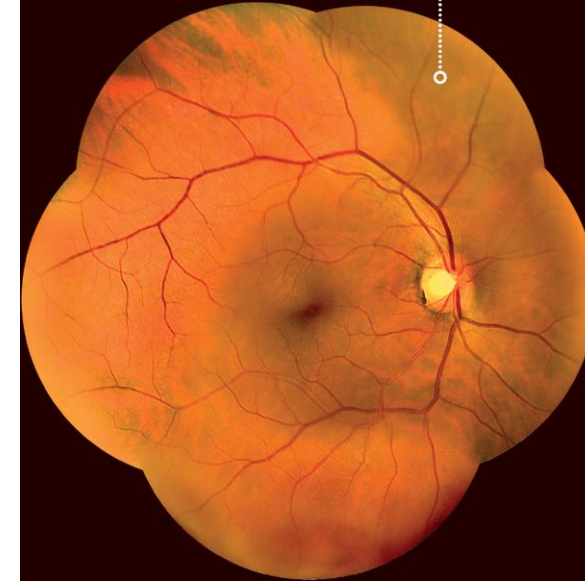
SENSITIVITY (=true positive/sick): probability of detection; the percentage of sick people who are correctly identified as having the condition.

Clinical Study of Matteo Di Bari MD, Alberto Di Bari MD «Automated Fundus Photography: Implications for Clinical Practice and Telemedicine», published on Retina Today, September 2018

TECHNICAL SPECIFICATIONS

HARDWARE SPECIFICATIONS

- Field of view 45°
- Field of view with mosaic function 90°
- Retinal resolution 14 micron
- Fixations 7 fixations set-ups
- Tablet dimension 10,4"
- Weight 14,7 kg
- Size 340x430x460 mm



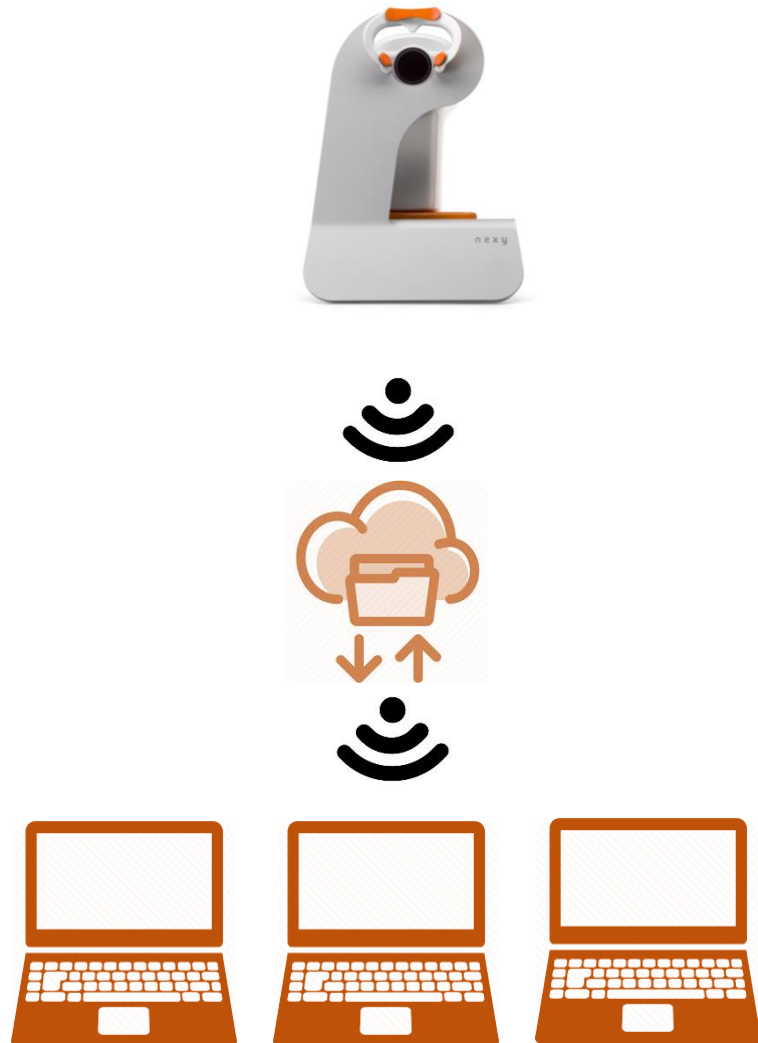
SOFTWARE SPECIFICATIONS

- Image filters – vascular, choroidal, nerve fibre, red free
- Cup-to-disc ratio for glaucoma screening
- Automatic mosaic function
- PC shared folder
- Fundus adapter to transfer images to a local pc
- CDR



IMAGES SHARING MODES

Shared folder into a local network



Nexy adapter to download images into a PC

